

MRA Head/COW

Last Updated: 2025

Name	Plane	Sequence	Slice	Gap	FOV	Scan Range
3-Plane Localizer	Ax, Sag, Cor					
3D TOF	Axial	3D TOF	=<1 mm	0 mm	20	Foramen magnum to Cingulate gyrus
OPTIONAL - INJECT CONTRAST						
CE-MRA	Axial	3D SPGR	=<1 mm	0 mm	20	Foramen magnum to Cingulate gyrus

Notes:

- Use 3D TOF, 3 slabs. Send 1mm axial source images and post processing 3D volumetric MIPs of full volume, anterior circulation and posterior circulation rotating in axial plane and sagittal planes.
- Place saturation band above axial block to reduce venous contamination.
- Contrast reserved only in select cases such as previously treated aneurysms with coiling and/or flow diversion stenting.
- Contrast type- per site. Contrast dose- 0.2mL/kg
- CE-MRA use SmartPrep MR fluoro trigger with ROI in carotid or 2mL test bolus timing to determine appropriate delay.

Images:

AXIAL TOF- Plan axial 3D block on sagittal plane, angle parallel to genu and splenium of the corpus callosum covering foramen magnum to cingulate gyrus (see Figures 1, 2, 3)

Figure 1:

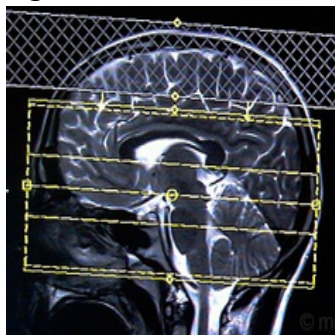


Figure 2:

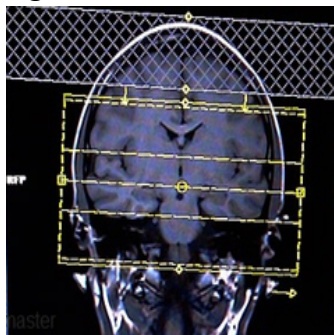


Figure 3:

