

**MR Brachial Plexus**

Last Updated: 12/2025

Name	Plane	Sequence	Slice	Gap	FOV	Scan Range
3-Plane Localizer	Ax, Sag, Cor					
AX T2 Hi-res CUBE/SPACE/FIESTA	Axial	3D T2 CUBE/SPACE/ FIESTA	1 mm	0 mm	12	C4-T2
AX OBL T1	Axial Oblique	T1 TSE	3 mm	0.3 mm	25	C4-T4, side of interest
COR OBL T1	Coronal Oblique	T1 TSE	3 mm	0.3 mm	25	C4-T4, side of interest
3D COR STIR CUBE/SPACE	Cor w Sag MPR	T2 STIR CUBE/SPACE	1 mm	0 mm	25	C4-T4, humerus to humerus
SAG OBL T1	Sagittal Oblique	T1 TSE	3 mm	0.3 mm	25	C4-T4, side of interest
<b>OPTIONAL - INJECT CONTRAST 3 min delay</b>						
COR T1 FS POST	Coronal	T1 TSE FS	3 mm	0.3 mm	25	C4-T4, humerus to humerus
AX OBL T1 FS POST	Axial Oblique	T1 TSE FS	3 mm	0.3 mm	25	C4-T4, side of interest

**Notes:**

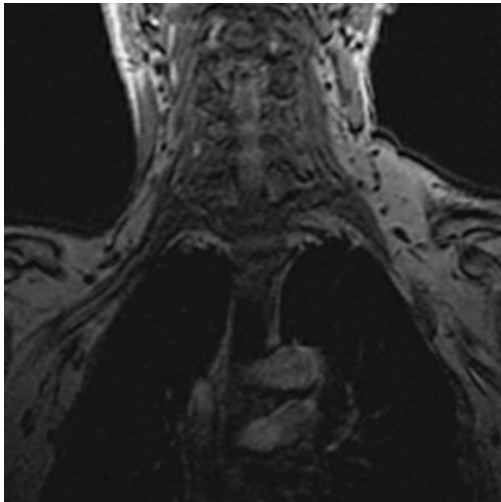
- 3T preferred unless extensive cervical hardware present
- Send source isotropic 3D Cor STIR CUBE/SPACE, 10mm MIP reconstructions, and sagittal oblique MPR
- Contrast recommended for mass/mets, infection, and inflammation. No need for contrast for trauma.
- Contrast type- per site. Contrast dose- 0.2mL/kg

- May use post contrast 3D Coronal VIBE (Siemens) or IDEAL (GE) if available

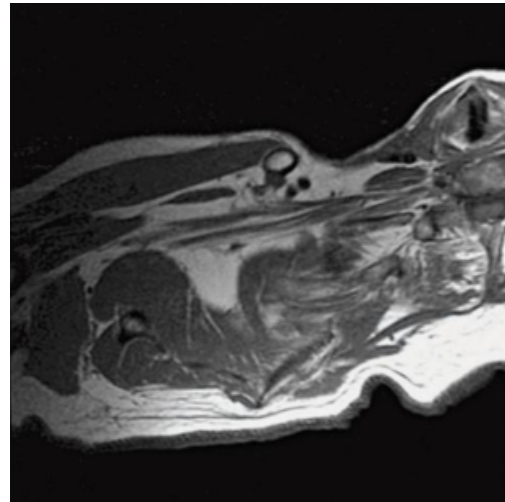
**Images:**

- AXIAL OBLIQUE- Plan on coronal localizer, parallel to plane of trunks and divisions of brachial plexus (see Figures 1, 2, 3)
- CORONAL OBLIQUE- Plan from axial oblique, parallel to brachial plexus (see Figures 4, 5)
- SAGITTAL OBLIQUE- Plan from axial oblique, perpendicular to the brachial plexus (see Figures 6, 7)
- CORONAL 3D STIR SPACE MIP (see Figure 8)

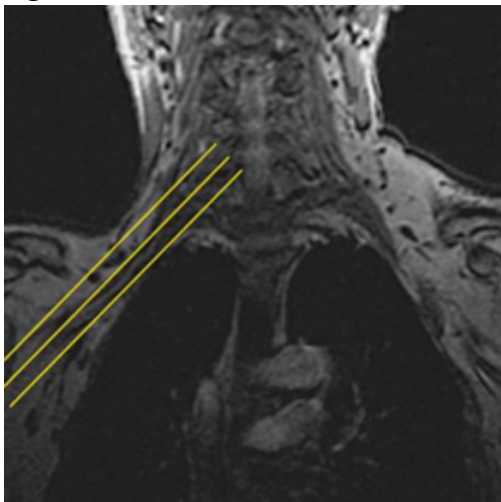
**Figure 1:**



**Figure 3:**



**Figure 2:**



**Figure 4:**

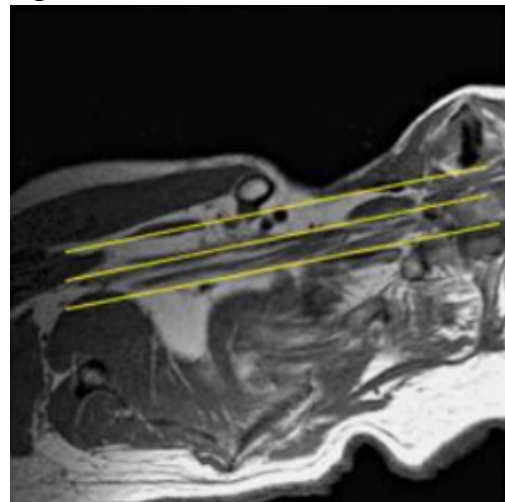


Figure 5:

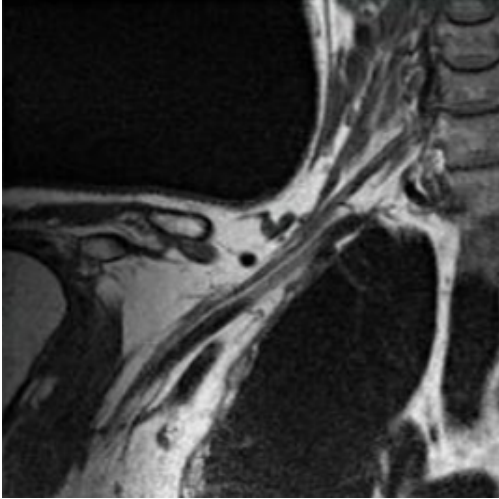


Figure 7:

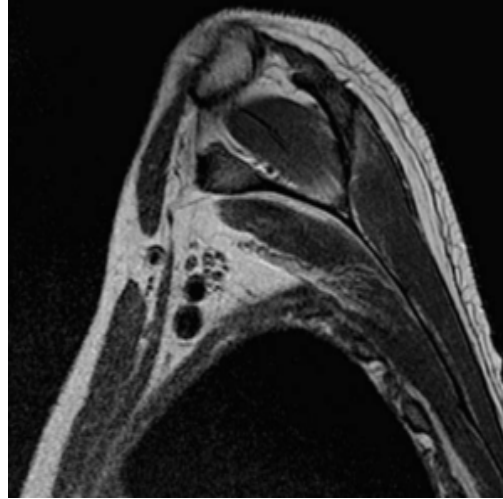


Figure 6:

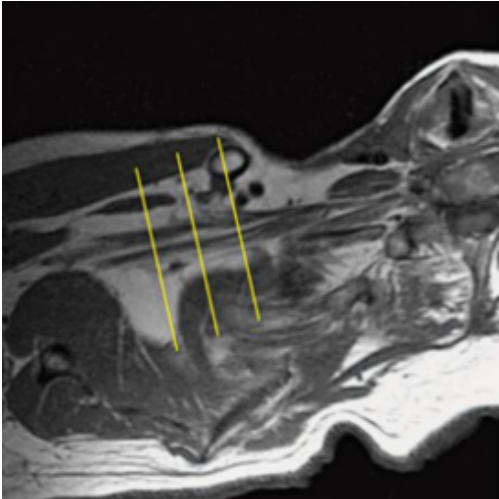


Figure 8:

